



## Elevatore a vuoto pneumatico

---

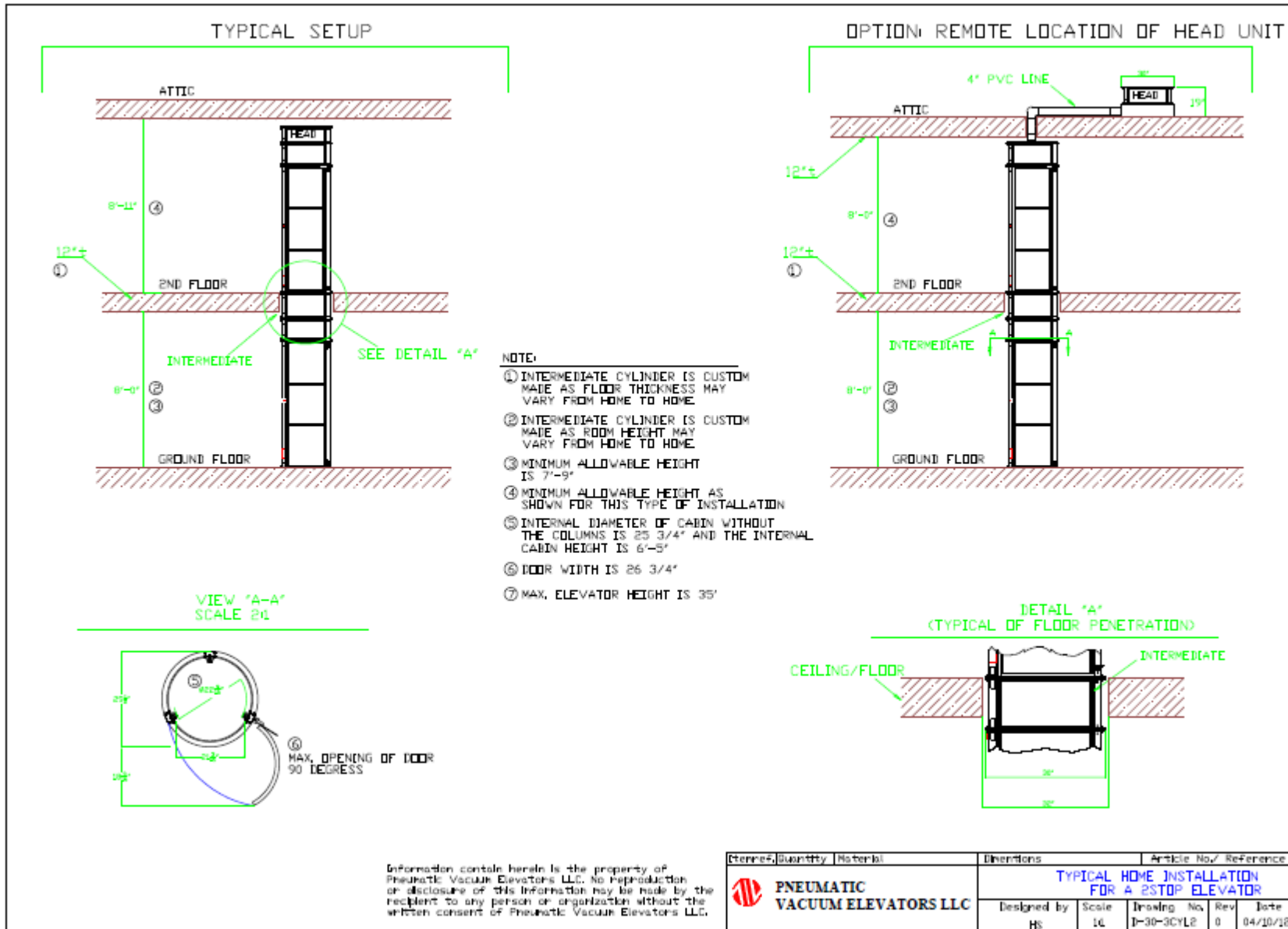
# Disegni Tecnici - Setup

Avp21\_00\_51 - Vers. 5.1 - 01/06/2015

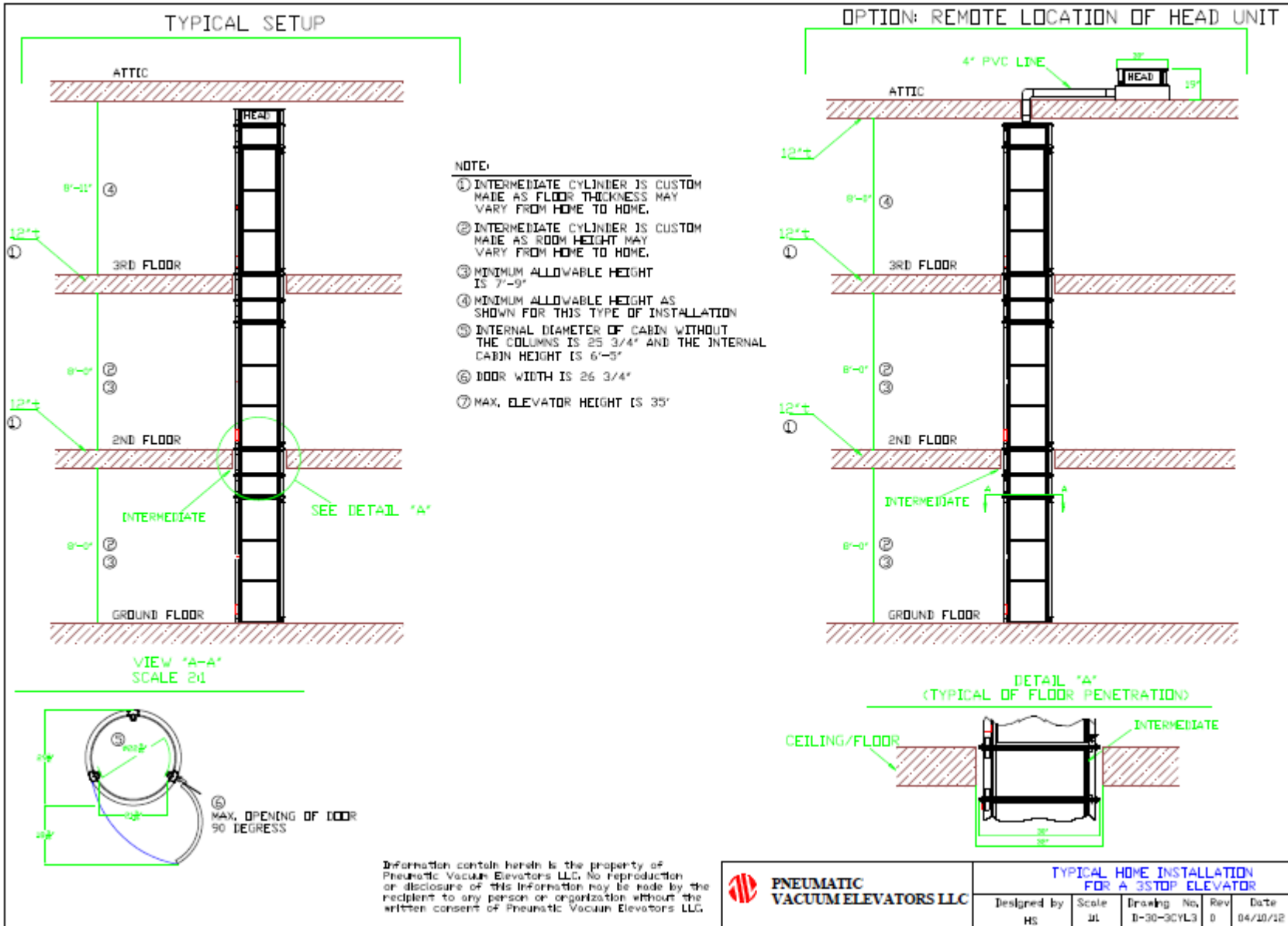
### Contenuti

Modello 30 - 2 Fermate - Setup	pag. 1
Modello 30 - 3 Fermate - Setup	pag. 2
Modello 30 - 4 Fermate - Setup	pag. 3
Modello 30 - Fissaggio	pag. 4
Modello 37 - 2 Fermate - Setup	pag. 5
Modello 37 - 3 Fermate - Setup	pag. 6
Modello 37 - 4 Fermate - Setup	pag. 7
Modello 37 - Fissaggio	pag. 8
Modello 52 - 2 Fermate - Setup	pag. 9
Modello 52 - 3 Fermate - Setup	pag. 10
Modello 52 - 4 Fermate - Setup	pag. 11
Modello 52 - Fissaggio	pag. 12

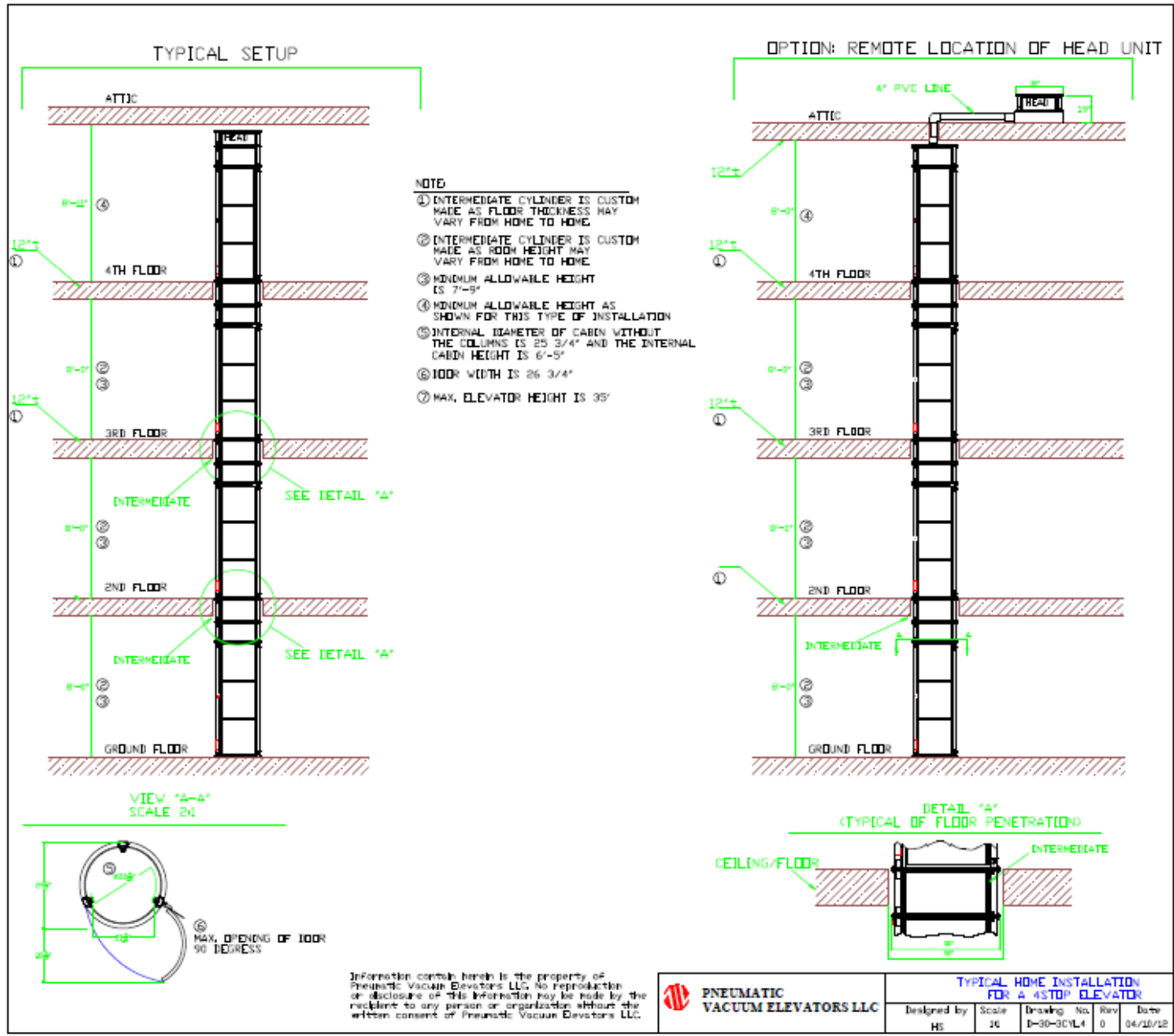
## Modello 30 2 fermate - SETUP



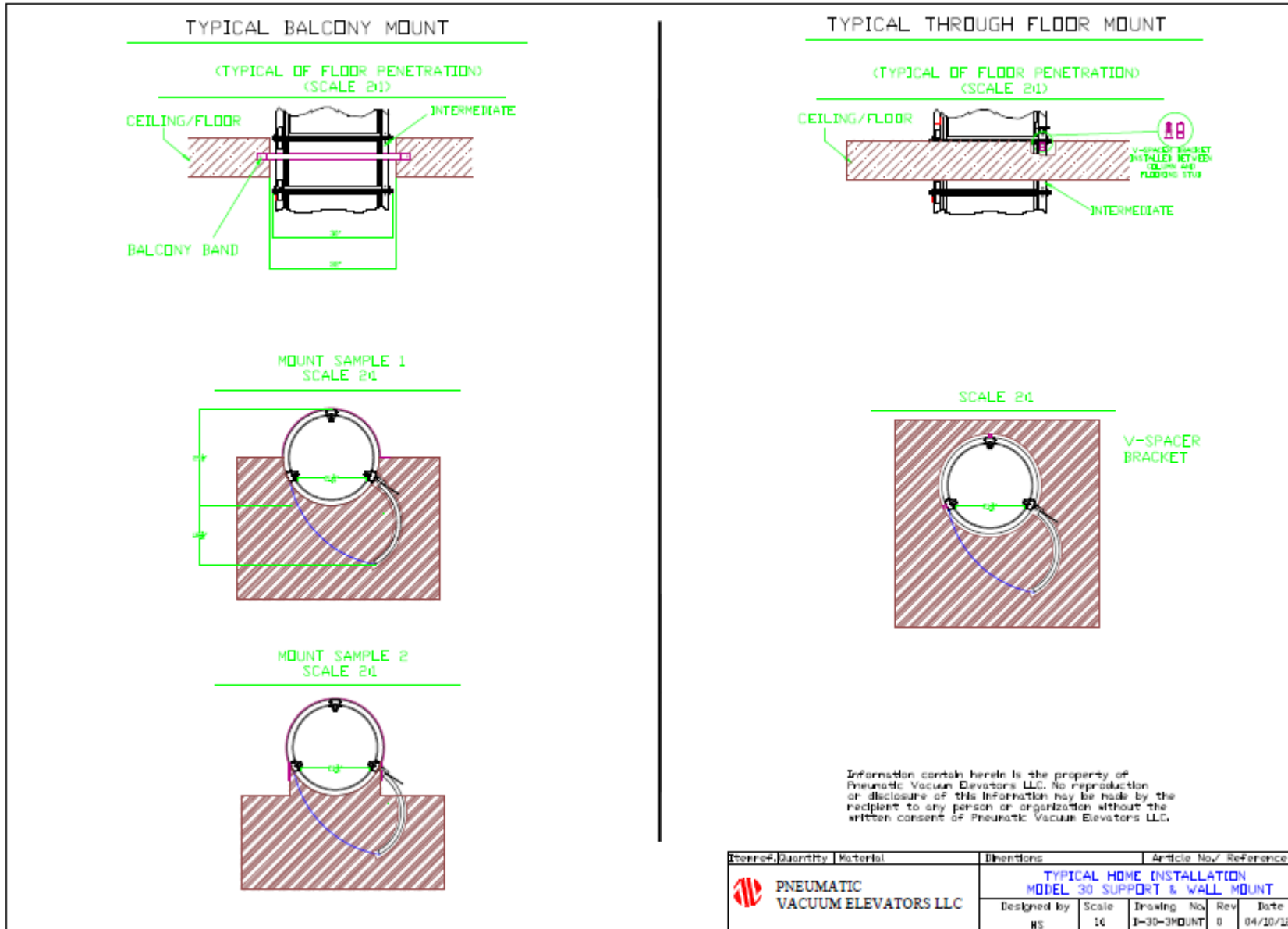
# Modello 30 - 3 fermate - SETUP



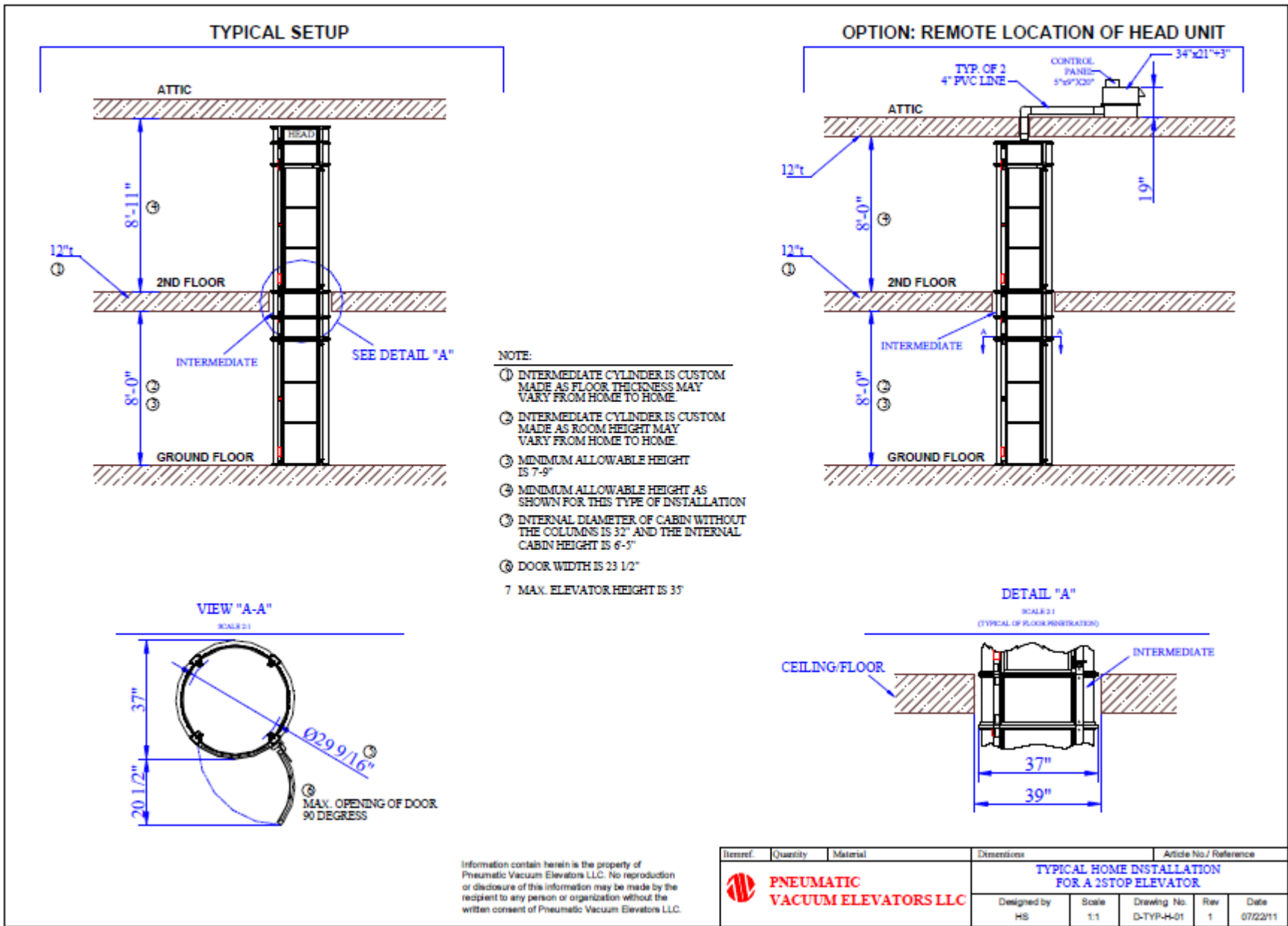
# Modello 30 - 4 fermate - SETUP



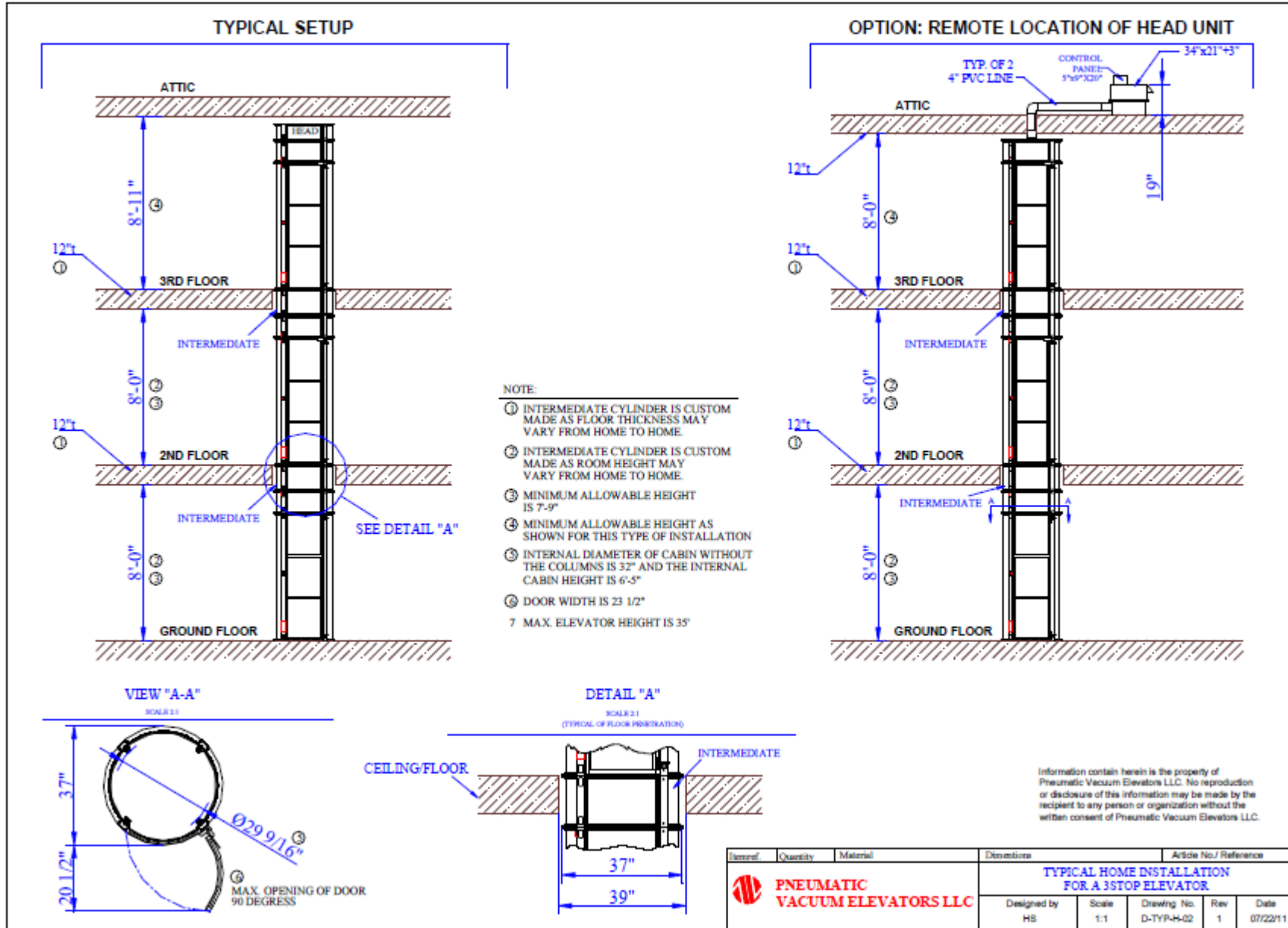
# Modello 30 - FISSAGGIO



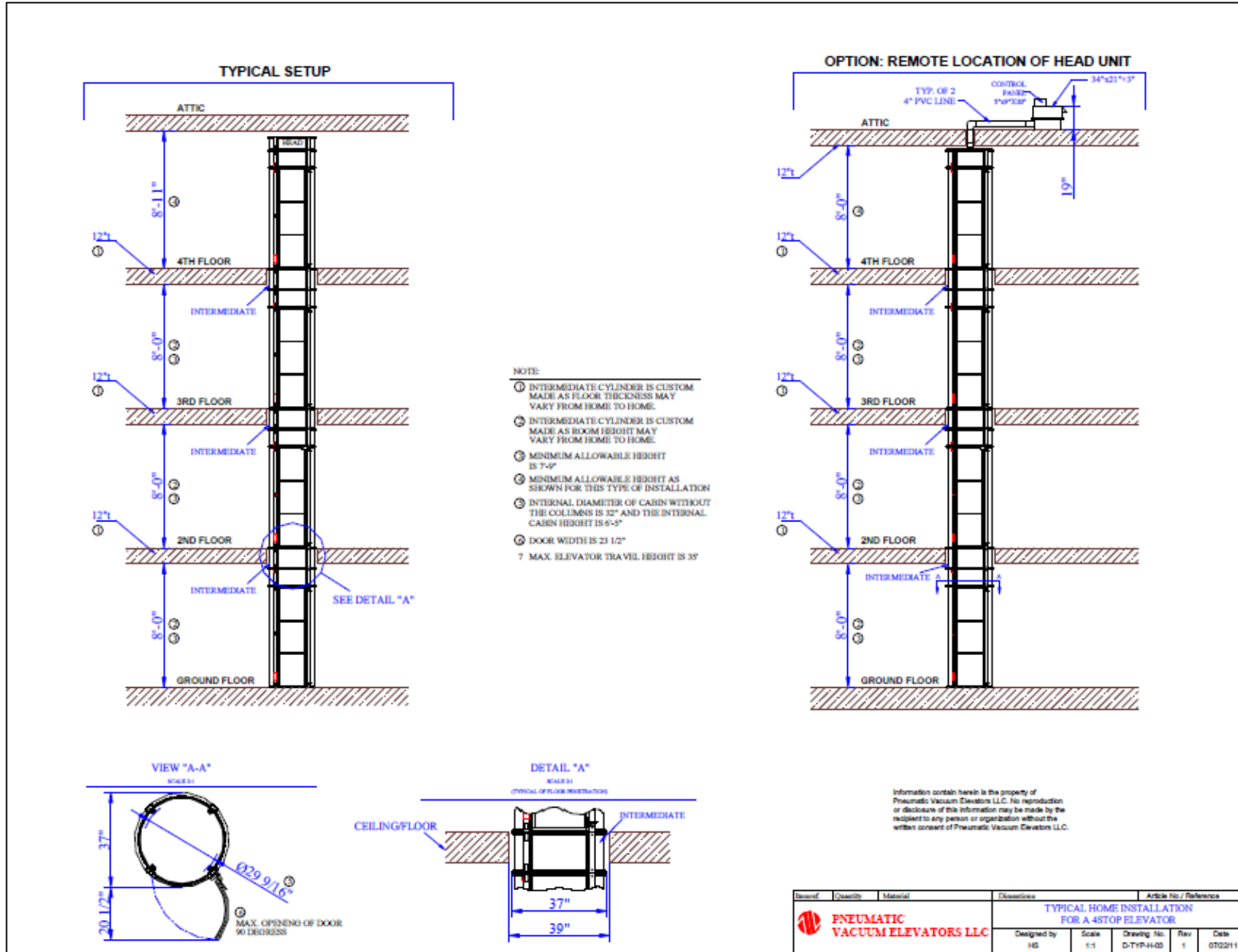
# Modello 37 - 2 fermate - SETUP



# Modello 37 - 3 fermate - SETUP

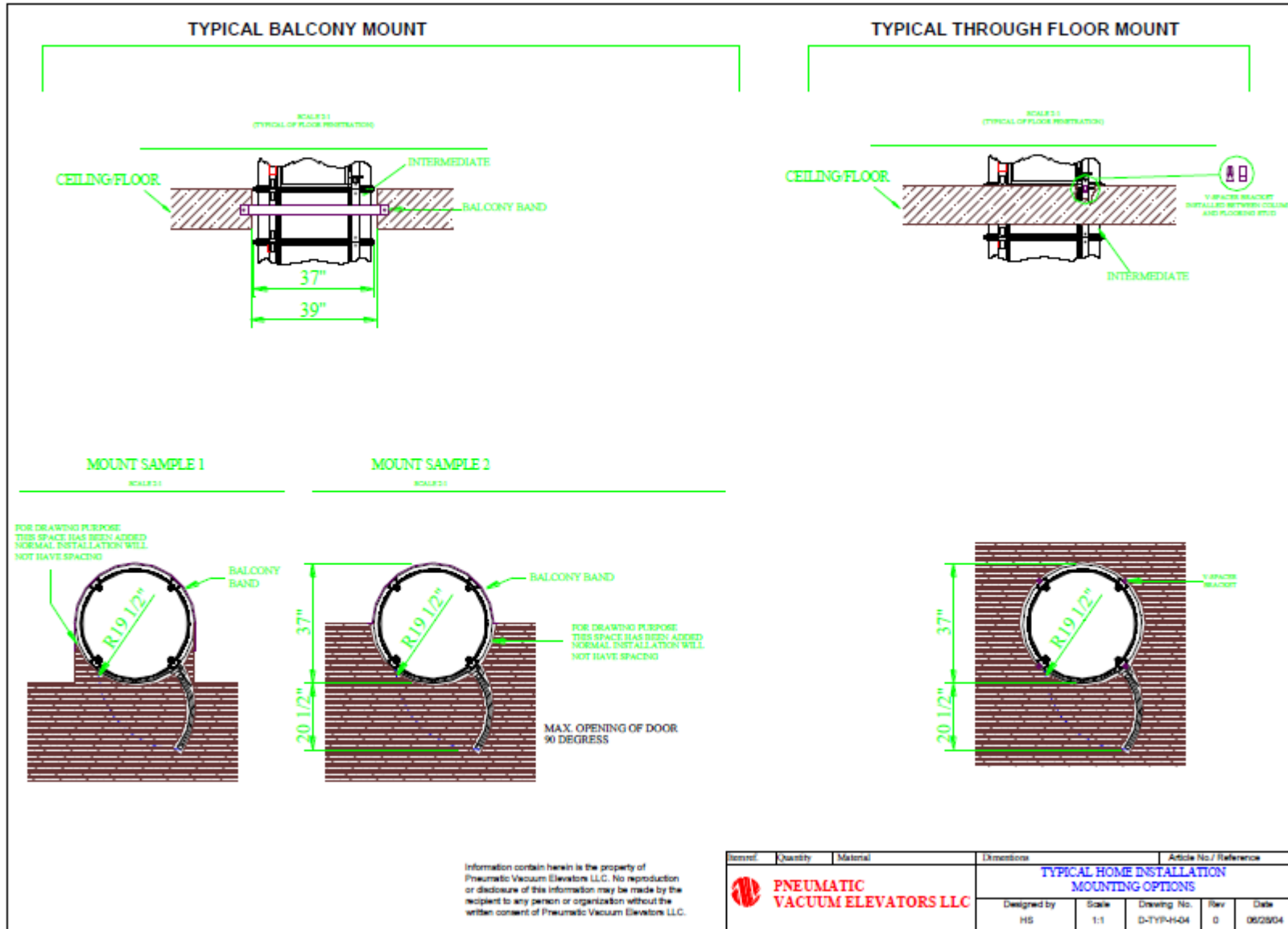


# Modello 37 - 4 fermate - SETUP

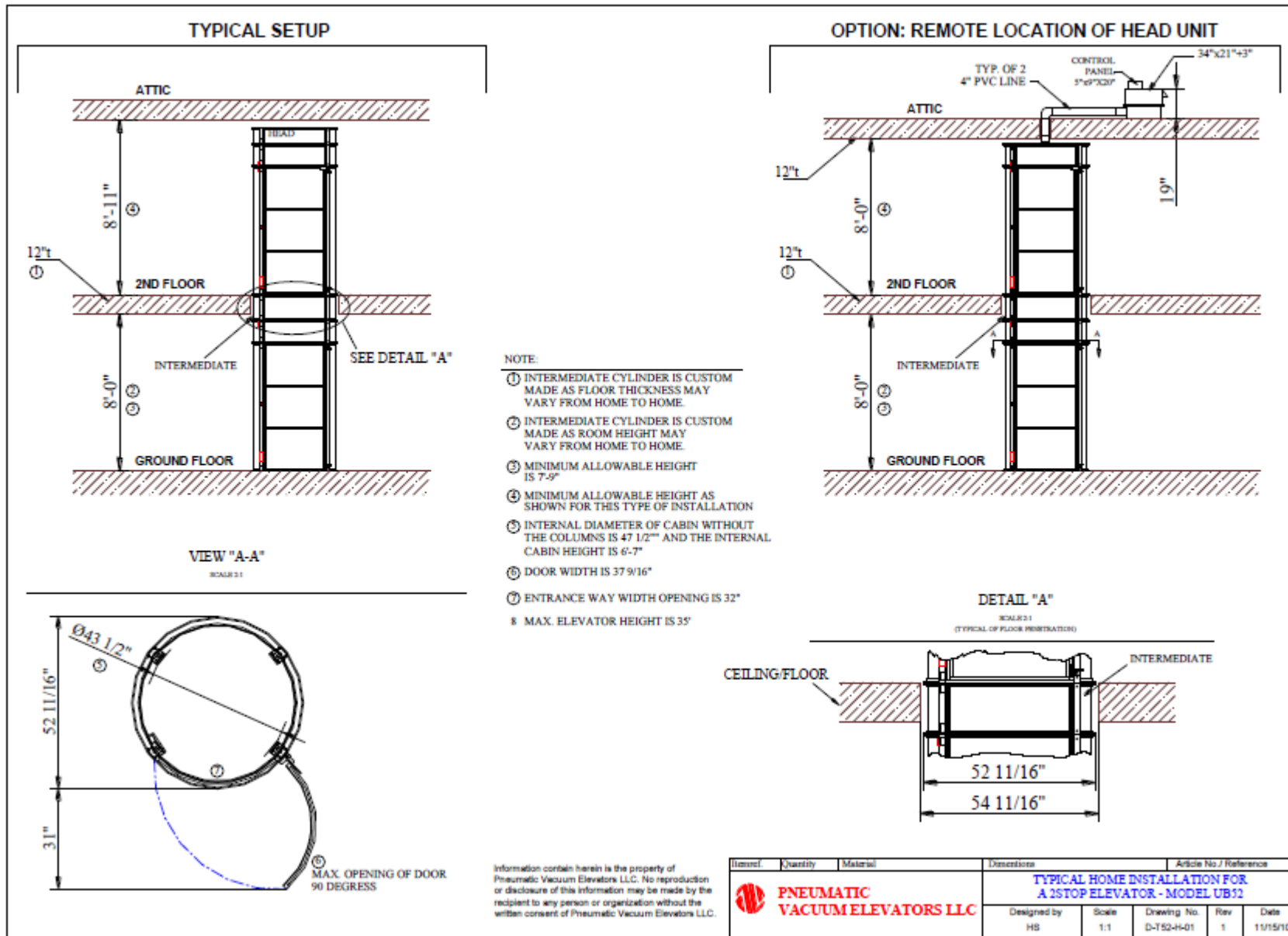




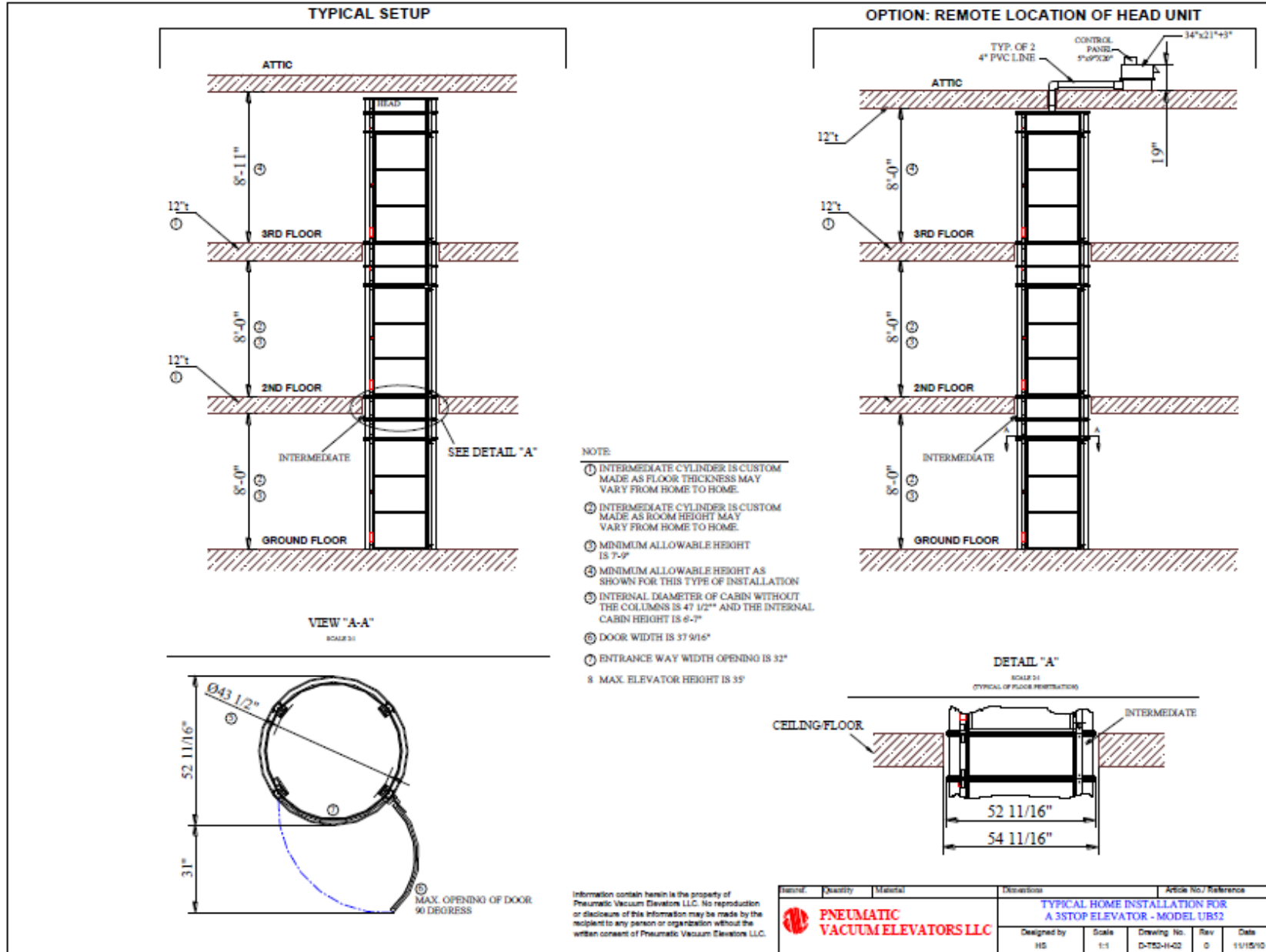
# Modello 37 - FISSAGGIO



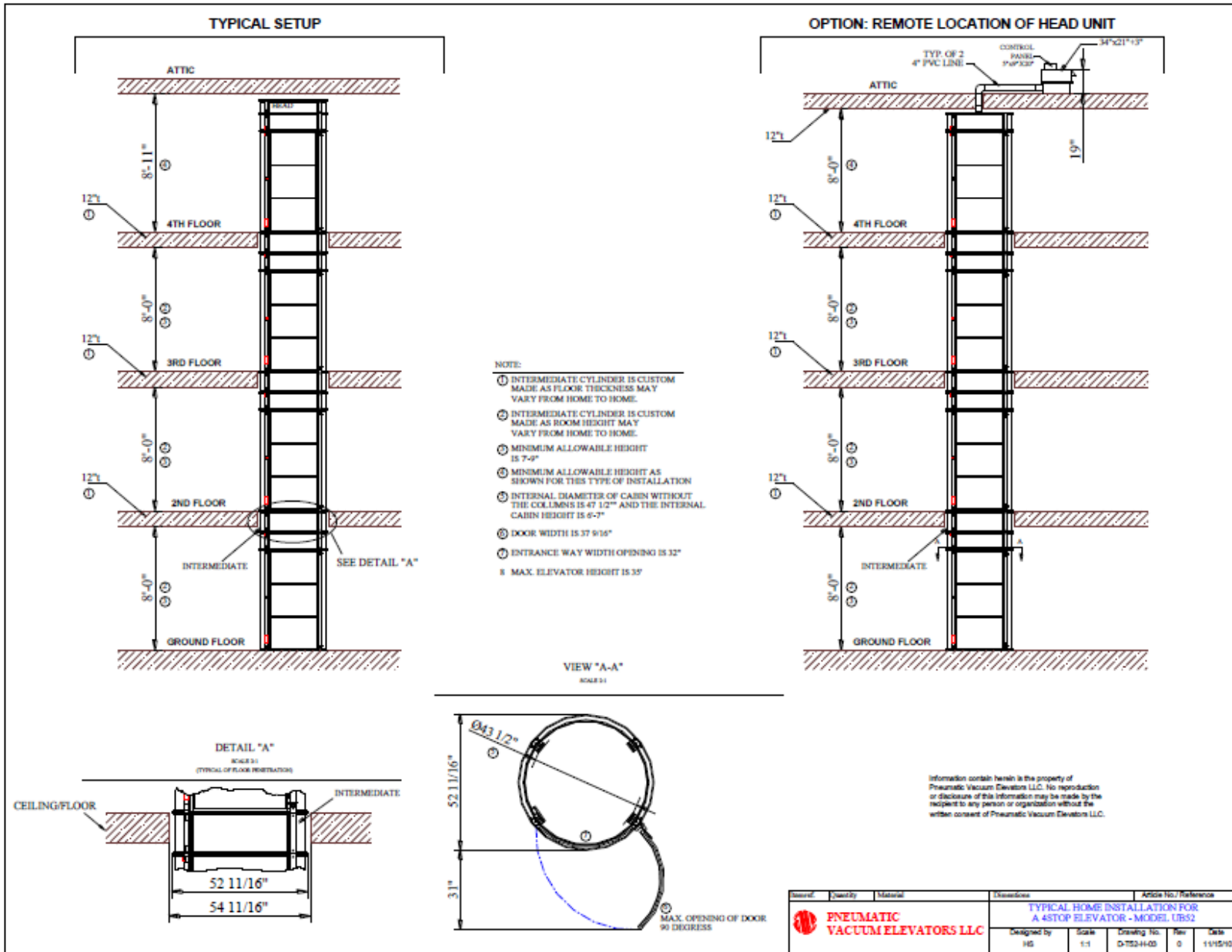
## Modello 52 - 2 fermate - SETUP



# Modello 52 - 3 fermate - SETUP



# Modello 52 - 4 fermate - SETUP



# Modello 52 - FISSAGGIO

